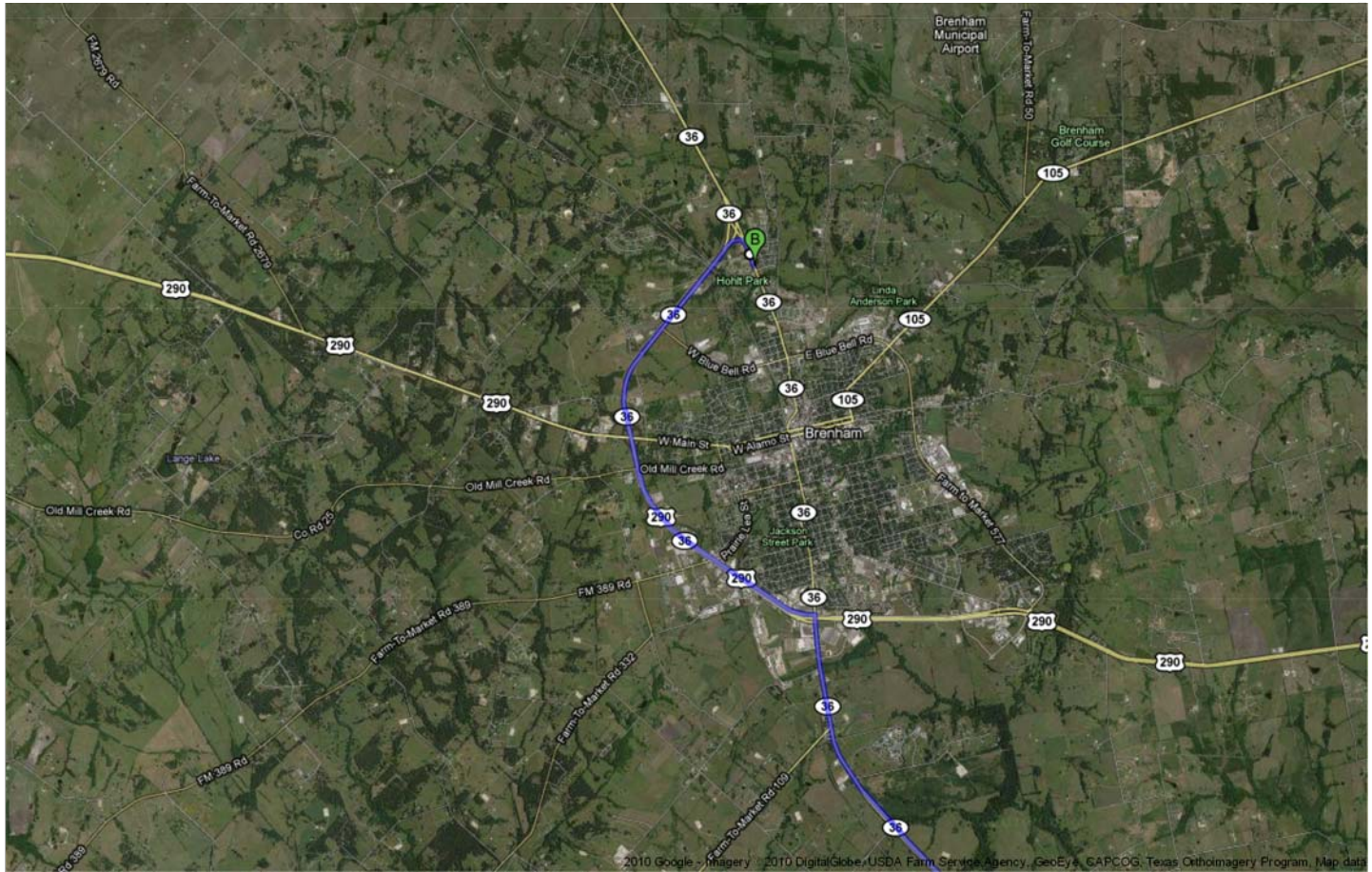




To see all the details that are visible on the screen, use the "Print" link next to the map.

[Get Directions](#) [My Maps](#)

[Print](#) [Send](#) [Link](#)



Driving directions to N Park St/Texas 36 BUSINESS S

104 mi – about 1 hour 55 mins
Via N Park St/Texas 36 BUSINESS S

A Ganado, TX

1. Head **northwest** on **3rd St** toward **E Putnam Ave** 0.2 mi
2. Turn **right** at **TX-522 Loop N/US-59 BUS N** 0.9 mi
3. Take the ramp onto **US-59 N** 35.6 mi
4. Take the **US-59** ramp to **TX-60/Hungerford** 0.1 mi
5. Keep **right** at the fork to continue toward **TX-60 N/US-59 BUS N** 0.3 mi
6. Sharp **right** at **TX-60 N/US-59 BUS N**
Continue to follow TX-60 N 19.7 mi
7. Slight **left** to stay on **TX-60 N** 112 ft
8. Turn **left** at **36th Division Me/Commerce St/TX-36 N**
Continue to follow TX-36 N 25.6 mi
9. Turn **left** at **E Main St** 0.3 mi
10. Slight **right** at **Farm-To-Market Rd 1456** 69 ft
11. Continue onto **W Main St/TX-36 N**
Continue to follow TX-36 N 16.3 mi
12. Turn **left** at **Feeder Rd** 0.2 mi
13. Take the ramp on the **left** onto **TX-36 N/US-290 W**
Continue to follow TX-36 N 4.3 mi
14. Turn **right** at **N Park St/Texas 36 BUSINESS S** 0.4 mi

B N Park St/Texas 36 BUSINESS S

These directions are for planning purposes only. You may find that construction projects, traffic, weather, or other events may cause conditions to differ from the map results, and you should plan your route accordingly. You must obey all signs or notices regarding your route.
Map data ©2010 Google

[Report a problem](#)

brenham, tx